



## Volker Colour Selection

### Wood and deco-Fantasia laminates

The wood and deco-Fantasia laminates for all Völker furniture are scratch, impact and friction resistant, as well as impervious to common chemicals.

All laminates are manufactured in accordance with DIN 68765 (equivalent to Emission Class E1) or DIN EN 438. If required, all surfaces are available in veneer and solid wood as an option.



Natural beech \*



Stained beech \*



Golden Alder \*



Mahogany \*



Natural Oak \*



Rustic Oak \*



Fine Cherrywood \*

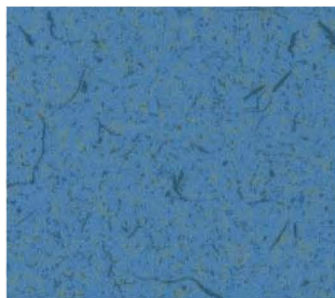


Royal Maple \*\*

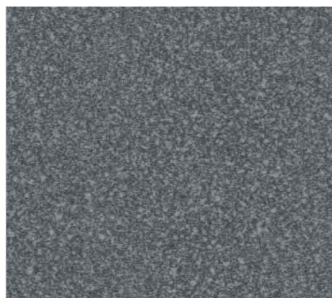
In addition to laminated wood finishes, the Völker 3080 K healthcare bed is also available in Deco-Fantasia laminate finishes.



Pagami Blue \*\*



Light Blue \*\*



Fine Light Anthracite \*\*



Wendy Creme \*\*

\*) Also available with undercarriage in matching foil or, if desired, anodized in Eloxal E6 EV1

\*\*\*) Only available with undercarriage in anodized Eloxal E6 EV1

Technical changes accepted, all dimensions are approximate values. Small deviations, either constructive or technical might occur. Volker Healthcare make no warranties, express, implied, or statutory as to the information in this document. O&OE.

**For More Information and Advice Please call:**

**Head Office & Showroom: Tel: 01752 511115    Regional Office & Showroom: Tel: 01909 774646**